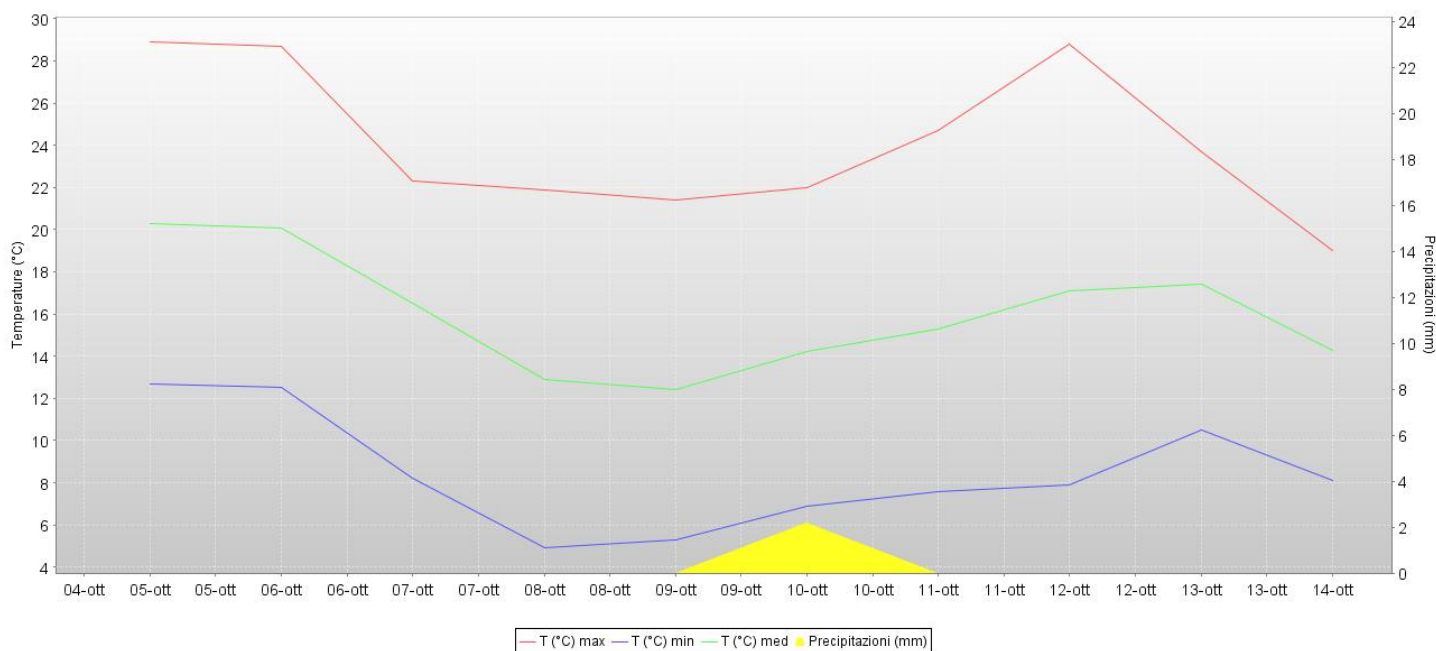
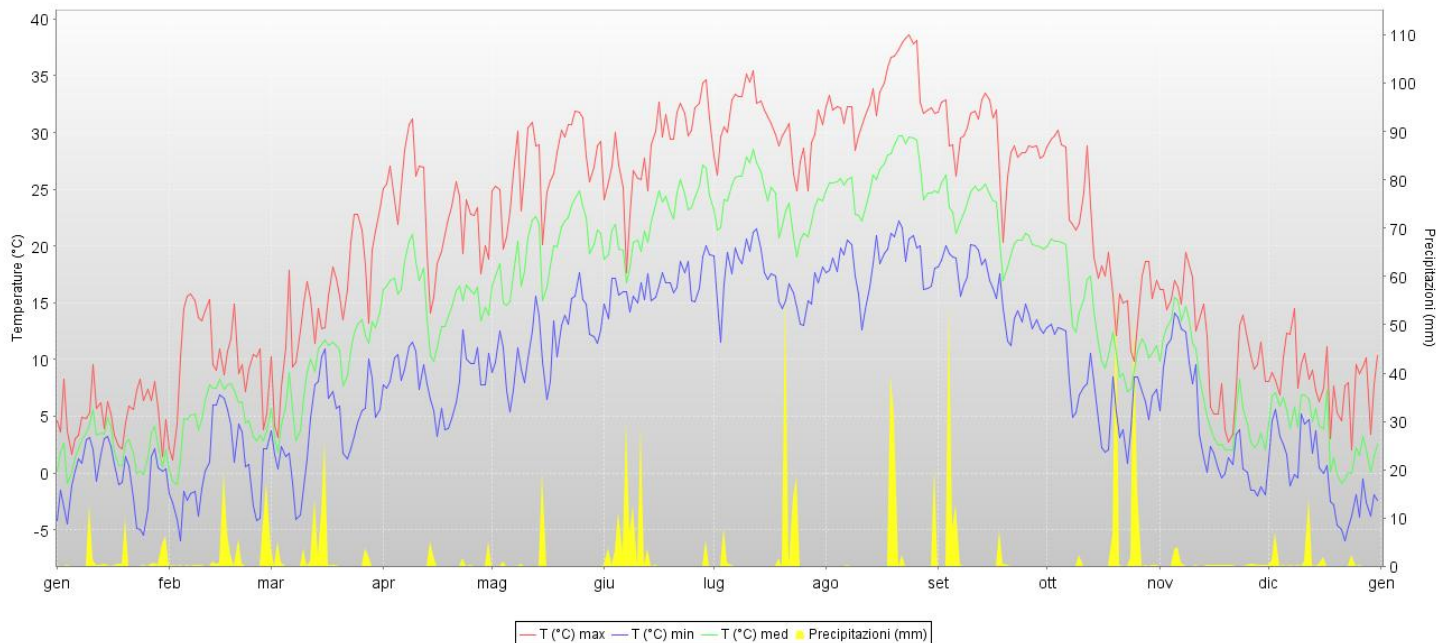




Stazione Agrometeorologica di Sabar Anno 2011



Aggiornamento al 15-10-2014	Valori annuali	Valori mensili											
		1	2	3	4	5	6	7	8	9	10	11	12
T min. Aria (°C)	-6.0	-5.5	-6.0	-4.0	3.2	5.4	13.6	11.5	12.6	11.1	0.8	-2.0	-6.0
T media Aria (°C)	14.2	2.1	4.7	9.4	15.5	19.7	22.4	23.9	26.2	22.2	13.1	7.1	3.5
T max. Aria (°C)	38.5	9.5	15.8	25.1	31.2	31.8	34.7	35.4	38.5	33.5	30.2	19.3	14.5
T media Suolo (°C)													
Precipitaz. (mm)	772.1	38.7	67.6	73.5	13.8	20.6	108.7	100.7	93.0	82.5	136.7	11.6	28.6
Num. gg. pioggia	65.0	5.0	8.0	10.0	4.0	2.0	10.0	5.0	4.0	4.0	6.0	2.0	6.0
Indice Winkler	2256				172	312	384	445	519	378	111		
Indice Huglin	2915				298	447	502	573	661	510			

I dati di temperatura aria minima e massima sono da intendersi come valori estremi mensili.

